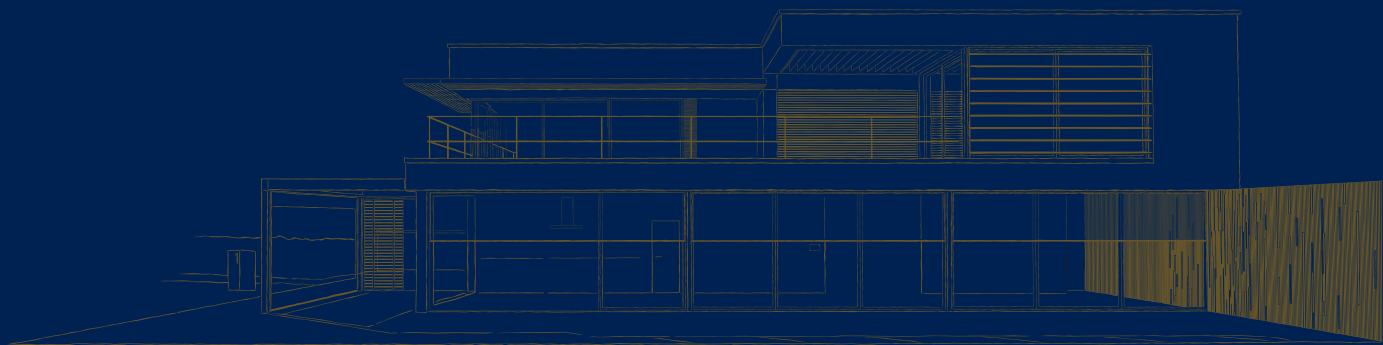


HEALTHY RESIDENTIAL CONCEPT



//

*We develop innovative products
and systems allowing for
aesthetic integration in every building.*

//

OUR MISSION: CREATING HEALTHY SPACES

"Renson specialises in ventilation, sun protection and outdoor. With experience dating back to 1909, and an integrated team of over 1600 employees, we develop systems and solutions which provide consumers with a healthy and comfortable living and working environment, also taking into account energy efficiency and the use of renewable energy. We develop innovative products and systems, and offer total solutions to make every house into a healthy and comfortable home. "We appreciate the aesthetic values of every building, allowing our sun protection and ventilation systems to be incorporated invisibly. Our outdoor products and aluminium blades for covering façades provide clear accents, offering added value to the architecture. Inside, we ensure that doors are integrated invisibly with no conspicuous frames or visible joints."

Paul Renson.



 **RENSON®**
115 YEARS OF
CREATING HEALTHY SPACES

COMFORTABLE LIVING STARTS WITH RENSON®

At Renson, we believe that high-quality products and innovative solutions contribute to an energy-efficient, comfortable and healthy life. There is a reason why our baseline is 'Creating healthy spaces'. And in doing so, we start from a few basic principles.



MINIMALIST DESIGN

We aim high when it comes to design and aesthetics. Renson solutions discretely fit into any project. The detailed finishing and seamless integration contribute to this fact.



THE POWER OF INNOVATION

Our hunger for innovation is what drives progress. We achieve impressive results together by developing and applying innovative technologies.



ENDLESS CUSTOMISATION OPTIONS

For your home or workspace, rustic or contemporary. Configuring a solution tailored to each customer and building is quick and easy.



SUSTAINABLE ENTREPRENEURSHIP

We cannot build a healthy living environment without tending to a healthy world. From our choice of materials to our production and logistics, we are building a sustainable business.



ULTIMATE EASE OF USE AND MAINTENANCE

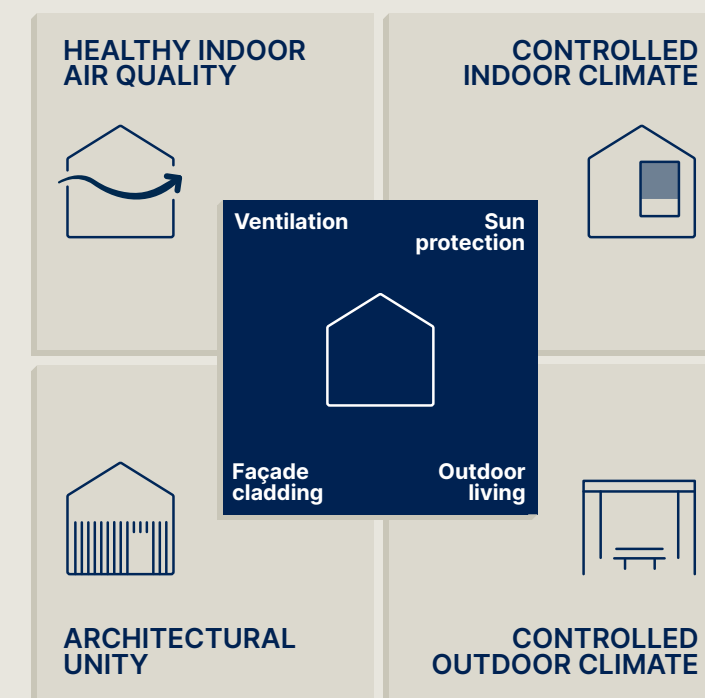
Thorough engineering is a function of ease of use and minimum maintenance. From configuration and ordering to quick and trouble-free installation, with our digital platform, RIO, as its beating heart.





HEALTHY RESIDENTIAL CONCEPT

Renson is innovation with a clear vision: ensuring the occupant's health and comfort, whilst taking energy efficiency and the added value of aesthetics into consideration. The continuous supply of fresh air and the extraction of contaminated air through a demand-driven ventilation system enable you to breathe healthy air at all times. Intensive ventilation and exterior window blinds allow the warmth of the sun to enter when required, but prevent unnecessary cooling costs on warmer days. The outdoor coverings ensure a pleasant ambiance so you can live outside throughout the year, without any hindrance from excessive sun, rain, wind or cold.

Whether you want something eye-catching ... or not: aluminium blades provide striking façades with straight continuous lines. The ventilation and sunscreen systems are hardly noticeable from the inside, while invisible door systems ensure that closed doors and walls appear as one, without any disruptive frames and hinges.



OUR SOLUTIONS

 HEALTHY INDOOR AIR QUALITY	 CONTROLLED INDOOR CLIMATE	 CONTROLLED OUTDOOR CLIMATE	 ARCHITECTURAL UNITY
<div><div>1</div><div>Invisivent® Natural ventilation supply</div><div>p.17</div></div>	<div><div>7</div><div>Fixscreen® Sun Protection</div><div>p.42</div></div>	<div><div>12</div><div>Camargue® Outdoor coverings</div><div>p.68</div></div>	<div><div>13</div><div>Linarte® Vertical façade cladding</div><div>p.78</div></div>
<div><div>2</div><div>Fixvent® Ventilation & Sun protection</div><div>p.19</div></div>	<div><div>7</div><div>Fixscreen® Minimal Sun Protection</div><div>p.46</div></div>		<div><div>14</div><div>Linus® Horizontal façade cladding</div><div>p.82</div></div>
<div><div>3</div><div>Endura Twist® Ventilation supply & extraction</div><div>p.21</div></div>	<div><div>8</div><div>Panovista® Sun Protection</div><div>p.53</div></div>		<div><div>15</div><div>eSafe® Parcel mailboxes</div><div>p.85</div></div>
<div><div>4</div><div>Invisido® Ventilation transit</div><div>p.23</div></div>	<div><div>9</div><div>Topfix® Sun Protection</div><div>p.55</div></div>		<div><div>16</div><div>Arlu® Invisible door solutions</div><div>p.87</div></div>
<div><div>5</div><div>Healthbox® 3.0 Ventilation extraction</div><div>p.27</div></div>	<div><div>10</div><div>Sunclips® Structural Sun Protection</div><div>p.62</div></div>		
<div><div>5</div><div>Endura® Delta Ventilation extraction</div><div>p.29</div></div>	<div><div>11</div><div>Loggia® Structural Sun Protection</div><div>p.57</div></div>		
<div><div>5</div><div>Waves®+ Smart ventilation</div><div>p.33</div></div>			
<div><div>6</div><div>Nightcooling Ventilative cooling</div><div>p.35</div></div>			



HEALTHY INDOOR AIR QUALITY



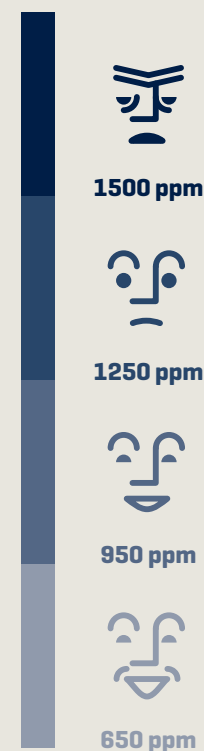
VENTILATION

A house is alive. Its occupants pollute the indoor air by breathing and sweating. However, their activities (cooking, showering, heating, smoking etc.) as well as the house itself (volatile organic compounds such as formaldehyde and terpenes) also contribute to inferior air quality. High levels of insulation and insufficient ventilation produce musty, polluted air and create a breeding ground for annoying moulds, viruses and bacteria. Fluid accumulation, CO₂ and high concentrations of dangerous gasses (such as radon) are also among the risks.

In the long term, a poor indoor climate can damage the health of the occupants. Respiratory problems, a dry throat, eye irritation, headaches, allergies, loss of concentration, low energy or sleepiness are only some of the possible effects. That is why it is extremely important to ventilate thoroughly and regularly.

Good for the occupant and the house

Many people are convinced it is necessary to open the windows from time to time to allow fresh air coming in. However, the impact is temporary and local. Moreover, ventilating with open windows is not controlled, which results in a loss of precious energy. Open windows are also associated with noise and are an invitation for burglars and annoying insects. Demand controlled ventilation is your only guarantee of an efficient and healthy indoor air quality.

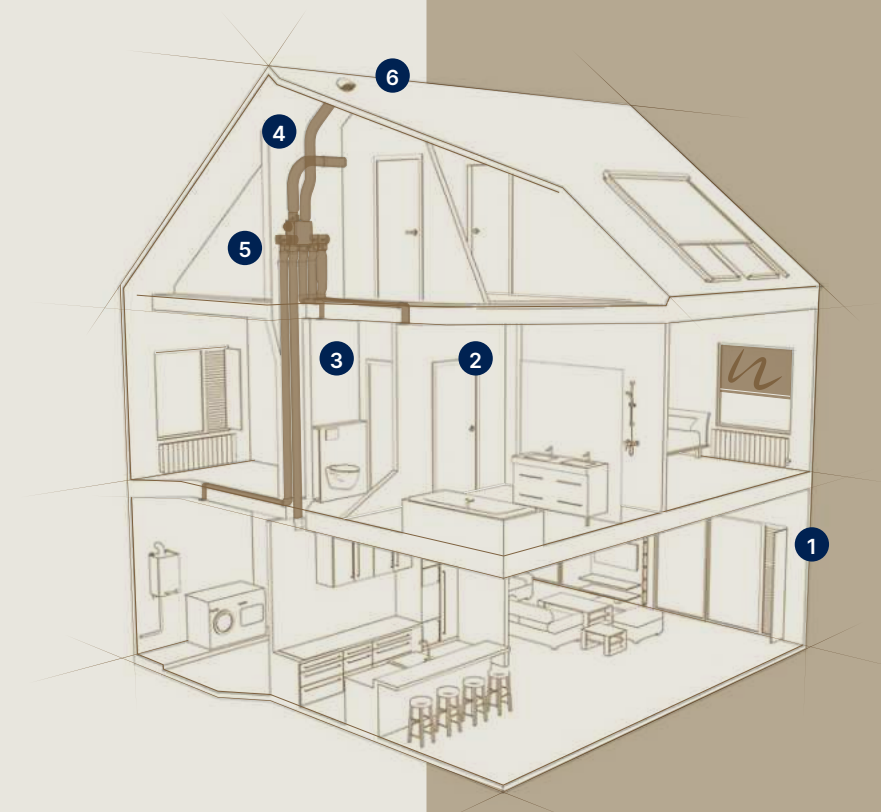


ppm = parts per million

The healthy residential concept: the principle of supply, transit and extraction in 6 steps

The mechanical ventilation is particularly suitable for both individual houses and for apartments having their own dedicated ventilation system. Whether the purpose is to introduce ventilation in large or small new build or renovated properties, the demand controlled ventilation of the Healthbox 3.0 complies to the needs of the habitants. The concept which guarantees optimal air quality while maintaining low energy consumption in the house, is defined in 6 steps:

- 1 Self-regulating window vents**
The self-regulating flap ensures that there is a constant air flow rate despite changes in wind speeds outside. With this type of regulation Renson window ventilation systems can guarantee a comfortable, healthy air supply without the nuisance caused by draughts.
- 2 Transit**
The flow of air through doors can be provided by door grilles such as the Silendo (an acoustically damping door louvre) or the Invisido (a discreet louvre above the door).
- 3 Extraction points**
The design extraction grilles permit the extraction of polluted air while maintaining the aesthetic looks.
- 4 Easyflex**
The airtight air duct system of Renson, Easyflex (superior class D), extracts the polluted air in an efficient way.
- 5 Demand-controlled extraction**
The extracted air flow is regulated individually per room by the Healthbox 3.0, based on the detection of the air quality per room. The extracted air flow rate can be limited when the air quality is good, while still providing a healthy indoor environment.
- 6 Roof outlet**
The roof outlet extracts the polluted air to outside. Renson has created a roof outlet with low air resistance, so the Healthbox 3.0 consumes less energy in extracting the air.



Scan me! And discover all our ventilation solutions.



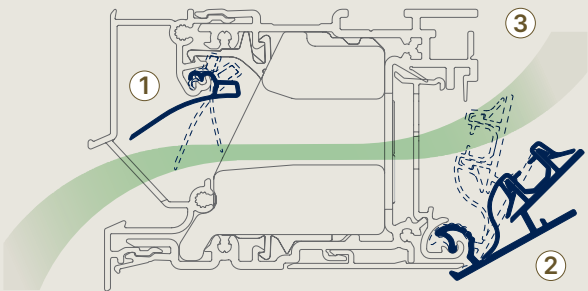
NATURAL VENTILATION SUPPLY

I-FLUX® TECHNOLOGY

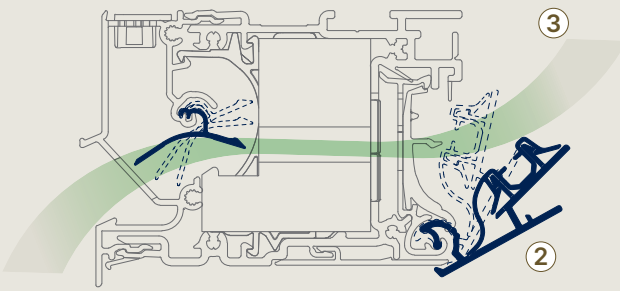
Thanks to the application of i-Flux technology, Renson can guarantee maximum comfort with minimum energy loss. i-Flux technology is based on the following principles:



HEALTHY INDOOR
AIR QUALITY



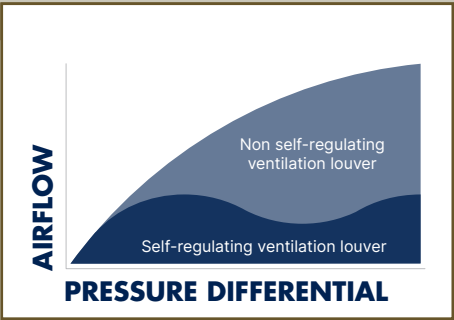
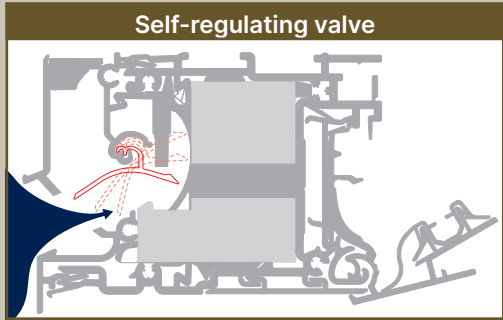
Invisivent® Air



Invisivent® Comfort

1 AIRFLOW INDEPENDENT OF THE WIND

The use of a self-regulating valve that reacts to changes in pressure makes it possible to maintain a constant airflow even in case of wind gusts, and keeps out draughts. Self-regulation is expressed in different classes, from class P0 (not self-regulating) to P4 (excellent self-regulating).



2 AIRFLOW DETERMINED WITH MANUALLY ADJUSTABLE INNER VALVE

The user can determine the desired airflow, e.g. according to the number of people in the room.

3 UPWARD AIRFLOW FOR OPTIMUM COMFORT

The shape of the inner valve conducts the fresh air upwards, leading to optimal air distribution throughout the room and guaranteeing maximum comfort.



INVISIVENT® AIR & INVISIVENT® COMFORT

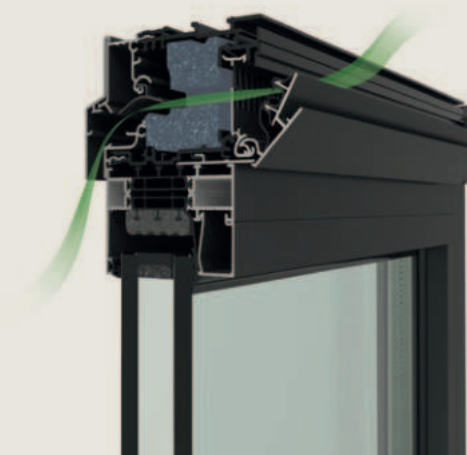
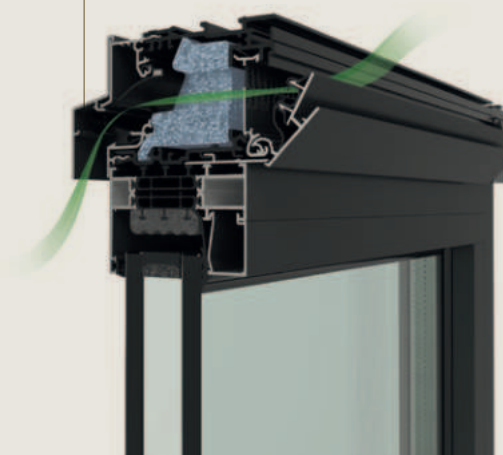
Natural air supply

With this new range, the focus – now more than ever – is on energy, acoustic, and thermal comfort. Furthermore, these new window ventilation systems are even more attuned to the intelligent Healthbox 3.0 ventilation unit, thus guaranteeing optimum indoor air quality at all times. Faster installation (monobloc principle), higher stability on the window, and a totally airtight finish are also priorities in the installation process.

The **Invisivent AIR** is an acoustic, thermal, and energy-efficient window ventilation system. The Invisivent AIR can easily be used in any project, be it a new-build or renovation project.

The **Invisivent COMFORT** goes a step further and guarantees even higher sound reduction and even more thermal and energetic comfort thanks to the integrated, self-regulating non-return valve. The Invisivent COMFORT is always combined with an extraction point in the same room (Healthbox 3.0, SmartZone configuration), thus limiting the loss of energy and uncontrolled ventilation even more.

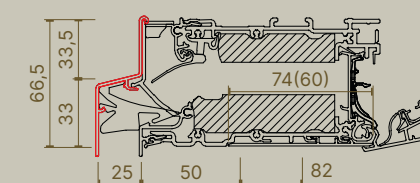
Design cap



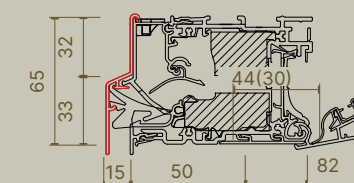
BENEFITS

- Healthy and natural ventilation
- Draught-free thanks to self-regulating valve
- Discrete positioning
- Burglar proof
- Rain- and insect repellent
- Maintenance-friendly

DESIGN CAP



Invisivent® Air



Invisivent® Comfort

Fixscreen® Mono AK

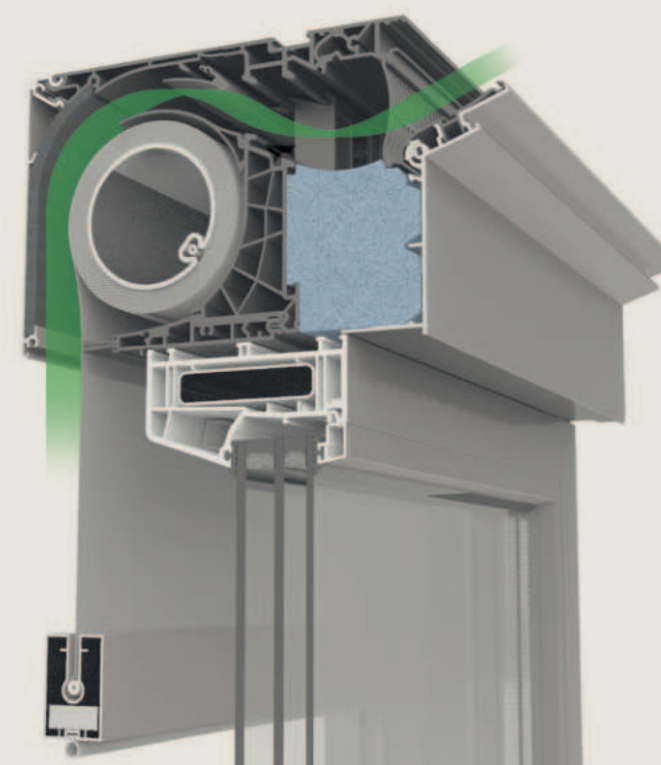
Fixvent® Mono AK



VENTILATION & SUN PROTECTION

Discrete ventilation, sun protection and acoustic comfort in one

In addition to providing sun protection, the Fixvent Mono AK also ensures ventilation and draught-protection thanks to the selfregulating valve which regulates the supply of fresh air. Wind resistant up to 130 km/h in closed position is guaranteed with the Fixscreen technology. Moreover, the screen can be used as an insect screen when closed.



BENEFITS

- Integrated ventilation & sun protection
- Draught-free thanks to self-regulating valve
- High level of acoustic and thermal comfort
- Wind guaranteed up to 130 km/h

Air tightness

The air tightness of the house is demonstrated by the Blowerdoor test. This allows you to calculate air loss at a pressure differential of 50 Pa. The low leak flow of the Renson window ventilators are measured according to EN1026 and are not decisive for the result of the blower door test.

Endura® Twist

VENTILATION SUPPLY & TRANSIT

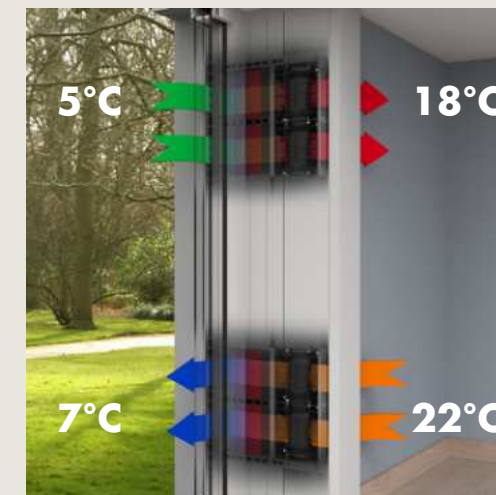
ENDURA® TWIST

Demand-controlled* Decentral mechanical ventilation with heat recovery

The Endura Twist is a decentral mechanical ventilation with warmth recuperation which stores the heat of the indoor air in its regenerators. As the fans turn every 30 seconds, the regenerators pass the stored heat to the fresh incoming air, creating a pleasant preheated air being blown into the room.

Due to the continuous cyclic operation of the alternating fans, which ensures a **constant air supply and air extraction**, the customer can enjoy an optimal air quality at any time. The quick installation without ducts and easy maintenance make the Endura Twist ideal for both **new-builds** as **renovations**.

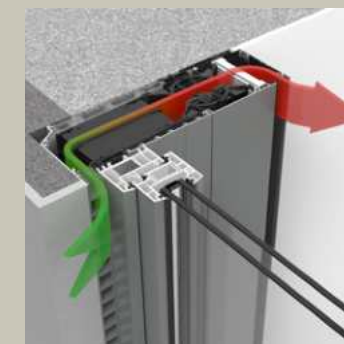
Thanks to its **innovative twisting technology**, the economical and highly efficient Endura Twist can boast with a thermal efficiency up to 81%.



* TouchDisplay integrated with CO₂ equivalent sensor.



Endura Twist horizontally



Endura Twist vertically

Available for both **horizontal** installation (on top of the window profile) and **vertical** installation (perfectly compatible with screens)

BENEFITS

- In hot summer months: night cooling
- Optional anti-smog filter
- Silent fan in the window vent
- Integrated sensors
- No ventilation ducting required (also no cleaning of ventilation ducts!)
- Easy maintenance: easy to replace



VENTILATION TRANSIT

INVISIDO®

Discrete transit above the door

Invisido is a discrete door grille, almost invisible. Because this grille is mounted on top of the door, an aesthetically disruptive opening beneath the door is no longer required. The unique design blocks see through and guarantees sufficient air transit from one room to another.



BENEFITS

- Discrete - fully integrated
- No see-through
- Suitable for all door thicknesses from 35 mm
- Suits every interior
- Guaranteed air flow - 25 m³/h
- Sound reducing - 28 dB
- Draught-free

VENTILATION EXTRACTION

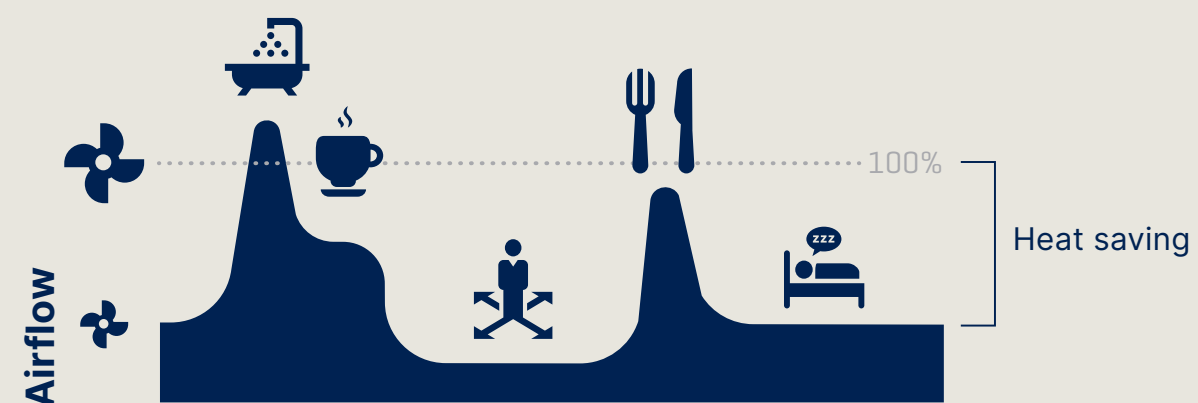
Design grille

THE IMPORTANCE OF DEMAND-CONTROLLED VENTILATION

**Correct ventilation is required to achieve optimum indoor air quality.
It is important to extract polluted air from rooms and ensure it is replaced with fresh air.**

People are not able to detect changes in air quality. So we can't detect when certain concentrations of CO₂ or VOC become too high. We therefore can't expect the occupants of a house to assess how much ventilation is required to achieve a healthy indoor air quality.

Therefore it is important that the level of ventilation is adapted automatically to the ventilation needs. The ventilation level can be automatically adapted to anticipate the different phases of the day using integrated, intelligent sensors in the central demand-controlled ventilation unit. This automatic adaptation saves 30 to 50% of energy as compared with a permanent ventilation flow.



Demand Controlled Ventilation: System C+ SmartZone



! BREEZE-FUNCTION

If there is a high demand for cooling, for example in summer, the Breeze function switches demand control off, so that the ventilation capability can be used to support the cooling effect.



HEALTHBOX® 3.0

Demand-controlled ventilation

The Healthbox 3.0 measures air quality in the form of relative humidity(RH), CO₂ and/or VOC (odour) concentration round the clock in each wetroom. The air extraction rate is varied automatically with the individual parameters according to the measured air quality. If the air quality in a wetroom is satisfactory, the airflow is reduced. The Healthbox 3.0 is fitted with 7 connections, extendable up to 11 with the valve collector.

In addition to the wetrooms, the sleeping accommodation can also be ventilated (**SmartZone**) and better air quality is achieved. The best possible air quality, with low CO₂ concentrations consequently guarantees a peaceful night's rest.

With **automatic calibration**, the system defines the air pressure set-up required for each room, so that the desired airflows are achieved.



Integrated electric sensors (RH and/or VOC or CO₂)

Plug & play: clip-on control module and RJ45 patch cables



BENEFITS

- Guaranteed good air quality: humidity and/or CO₂ and/or VOC detection
- Maximum energy savings through demand control and zoning
- Quietest solution on the market
- Convenient user app 'Renson Ventilation'
- Low-maintenance and long lifespan
- Compact, light and manoeuvrable
- Extra comfort in combination with Invisivent window vent

SmartConnect

Integrated SmartConnect means that the Healthbox 3.0 can communicate with the user (via the app) and with other smart devices. This is how the Healthbox 3.0 is in the Smart Home family and thus guarantees a high degree of total comfort.

The corresponding app gives the user a view into the air quality and ventilation activity in the home. It also allows various profiles for matching the ventilation class to the user's requirements.



ENDURA® DELTA

The demand-controlled ventilation with heat recovery

The Endura Delta outperforms regular heat recovery units as it is standard equipped with integrated air quality sensors and is immediately ready to start ventilating any home based on the measured relative humidity (RH), CO₂ and VOC-level. It consists of 4 top connections (T4) or 2 top/2 bottom connections (T2/B2), both available in 3 different flow rates.

The Endura Delta is equipped with dynamic sensors that continuously monitor the extracted air for CO₂, relative humidity(RH) and/or harmful VOCs (volatile organic compounds). On the basis of these measurements, the Endura Delta will adapt the

ventilation rate to your living pattern, thus creating a smart and energy-saving form of ventilation.

Within a constant air flow, there is not only useless energy consumption, loss of heat and sound emission. There will also be insufficient ventilation when needed.

Opposed to a constant air flow, the Endura Delta detects that the humidity of the extracted air increases whenever somebody takes a shower. It then temporarily increases the extract air flow rate until the humidity level has sufficiently gone down again.

330 T4



330 T2/B2



380 T4
450 T4



380 T2/B2
450 T2/B2



BENEFITS

- Control the system by quickly and intuitively navigating through the various menus
- Check the status of the ventilation system. The app offers you feedback on the total air flow, the relative humidity level, the indoor air quality, the inside and outside temperature and the filter status.
- Set timers that allow you to make temporary changes to the current ventilation program
- Configure the unit (installer)
- Fill in a measurement report and register the unit (installer)

ENDURA® DELTA APP

As an innovative ventilation specialist, Renson has set itself the objective to transform every home into a healthy and comfortable living environment. The Endura Delta – a demand-controlled ventilation system with integrated heat exchanger – can be controlled by smartphone or tablet. The app also provides information about the functioning of the system and the air quality in your home.



Design grille

ACCESSORIES

EASYFLEX®

Flexible duct system

Easyflex is a semi-rigid, corrugated air duct made out of polyethylene with an external diameter of 140 x 64 mm or Ø 90 mm. The smooth inner surface of the double walled air duct is treated with antistatic and antibacterial additives to prevent dust accumulation and bacteria outbreaks.

The limited height of the Easyflex air duct allows it to be installed easily into false walls/ceilings, in concrete or screed. A high air flow combined with a low air speed guarantees a silent air duct system.

Flat oval

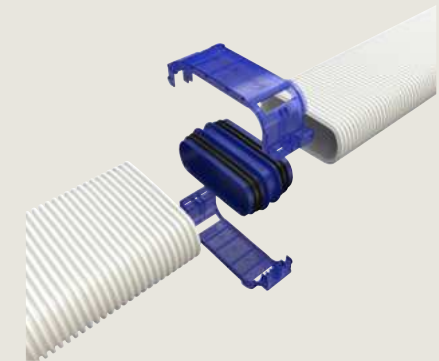


Round Ø 90



BENEFITS

- Flexible duct system
- Large air flows at low air speeds
- Compact and easily installed into false walls/ceilings, in concrete or screed
- Treated with antistatic and antibacterial additives
- High acoustic comfort
- Airtightness D (top class)



ALUMINIUM DESIGN GRILLES FOR EXTRACTION

These aluminium design grilles have been developed for installation in or on the ceiling (or wall), for plasters, plasterboards or MDF surfaces. These grilles are available in RAL 9010 matt (white) as standard but can be recoated in other colours. With a choice of 6 different designs, they can be combined to suit every style of decoration. The grilles come

with a connection for a diameter of 80 or 125 mm. Design grilles have no damper control blades and are therefore noiseless; the central ventilation unit is responsible for regulation. The design grilles can therefore always be perfectly cleaned without disrupting the ventilation system.

Deco



Puro



Square



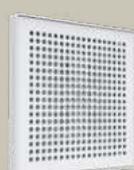
Aqua



Diagonal



Artist





SMART VENTILATION

WAVES® +

DEMAND-CONTROLLED DECENTRALISED MECHANICAL VENTILATION

Despite its compact size, Waves+ delivers impressive performance. The unit will effectively remove polluted air even with longer ductwork. Moreover, Waves+ continuously monitors the air and reacts when needed. Specifically, if you take a shower, the fan will work harder to remove the damp indoor air. Moisture problems solved! Ditto for odours from the toilet, deo, cooking or baking. This, thanks to the built-in RH and VOC sensors. It calibrates itself very easily via the app: it measures the pressure drop in the ducting system and adjusts the speed automatically to achieve the right flow rate. Your installation is thus immediately compliant too. Moreover, operation can be personalised via the app.



BENEFITS

- Wide range of mounting options thanks to IP44 classification and large build-up of pressure
- Suitable for wall and ceiling mounting
- Suitable for ø 100 & ø 125 mm ducts thanks to foam ring
- Step-by-step set-up instructions with the Renson installer app
- Automatic calibration is based on a pressure measurement in order to make sure that the required airflow rate is effectively delivered
- Airflow can be finetuned
- Built-in RH, VOC and/or CO₂ sensors.





Ventilative cooling

VENTILATIVE COOLING

NIGHTCOOLING

Ventilative cooling, also known as “nightcooling,” is the principle where cooler outside air is used to naturally cool down the house. With ventilative cooling, large natural air flows are conducted into the house via louvres. This air circulation extracts warm air thus cooling the house. The night coolness is stored in thermal mass of the house and is released during the day, creating a pleasant indoor climate. And this is all completely free of charge. As ventilative cooling requires high air flows, one or more louvres are placed outside the windows.

That is the reason for selecting louvres with a large air throughput, which also ventilate reliably. The louvres are water and insect proof thanks to the design of the blades and integrated insect screen. This allows the windows to be open at night in order to cool the room. In new buildings, nightcooling is built into the design of the house. In existing houses a louver can simply be installed in front of each opening window.



Nightcooling open



Nightcooling closed

Louvre type 431



This surface-mounted louver ensures secure ventilation of your home.

Louvre type 432



To ensure increased light inflow in winter, and for temporary removal, this louver is simply removable. It is fixed from the inside to ensure risk-free ventilation.

Louvre type 424RC2 (WK2)



For extra secure ventilation, a burglar proof louver is used for ventilative cooling.

CONTROLLED INDOOR CLIMATE





SUN PROTECTION

COMFORT TAILORED TO EACH SEASON

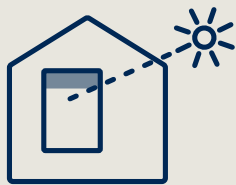
Saving energy is one of the key challenges in new construction and renovation. Windows play a vital role in this process.

Large glass panels are frequently chosen in contemporary architecture. Today's high-performance glazing ensures good insulation and plenty of natural daylight guarantees optimal energy consumption and increased comfort in the home. Artificial, energy-intensive light does not suit pleasant, bright living spaces. During the winter months, the low sun also ensures pleasant warmth in the house, which means there is less need to use heating.

Everyone knows however that the sun can also influence the indoor climate less positively. Excessive sunlight can cause overheating, disruptive reflections on screens and discoloration of the furniture and decor.

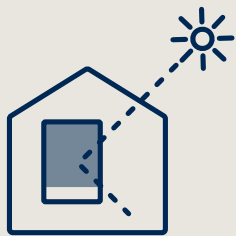
An efficient outdoor sun protection – brise-soleil above or in front of the window, sliding panels or wind-resistant screens – enables the occupants to enjoy the advantages of the sun at any time of the day. These systems stop the sun rays from heating the indoor air, without disturbing the outside view.

Dynamic outdoor sun protection provides extra efficiency by keeping out the excess sun when necessary but still allowing to enjoy the pleasant solar gains in the winter.



Winter

When there is a low sun it is important to maximise solar gains (warmth and light) to increase comfort and limit energy loss.



Summer

When the sun is high in the sky it is necessary to limit solar gains using an efficient outdoor sun protection. The application of screens and awnings avoids energy-wasting cooling and limits disruptive reflections without losing the view to the outside.

3 LEVELS OF COMFORT

“Outside sun protection, guaranteeing comfort at 3 levels: thermal comfort, visual comfort and aesthetic comfort.”

WHY CHOOSE SCREENS?

Up to 10 degrees cooler

Screens block the sunrays before they even reach the glass, making them an ideal solution for keeping indoor temperatures in check. With smart and correct use, fabric sun protection can keep indoors up to 10°C cooler.

Save on energy

In summer, indoor temperatures are kept under control without the need for energy-guzzling air conditioning. In winter, with the screens up, maximal advantage is taken of the low-lying sun and the associated warming indoors, leading to energy savings all year round.

For every project

Renson offers fabric sun protection for surface areas up to 27.8 m², which are resistant to weather and windspeeds up to 130 km/h thanks to the Fixscreen-technology. There are also numerous installation options, with a suitable screen setup for every window and building.

Durable and stylish

Choosing aluminium means opting for durability and a stylish finish. It ensures the screens maintain a sleek appearance over the long term. The stylish finish of each component and the optimal integration into the façade – even with retrofitting – complete the package.

5
YEARS
GENERAL
WARRANTY

7
YEARS
FIXSCREEN
WARRANTY

10
YEARS
COATING
WARRANTY



Non-windproof sun protection
at 130 km/h



Fixscreen® at 130 km/h

Wind tunnel tests

In addition to pressure tests, wind tunnel tests are highly suitable for determining the wind resistance and durability of sun protection systems. Even though wind tunnel tests are not standardised or mandatory, Renson does carry out wind tunnel tests as they provide more truthful results. They form the basis for our extensive wind warranty of 130 km/h in closed position.

Fixscreen® Recessed

FIXSCREEN®

Keeping homes cool since 2005!

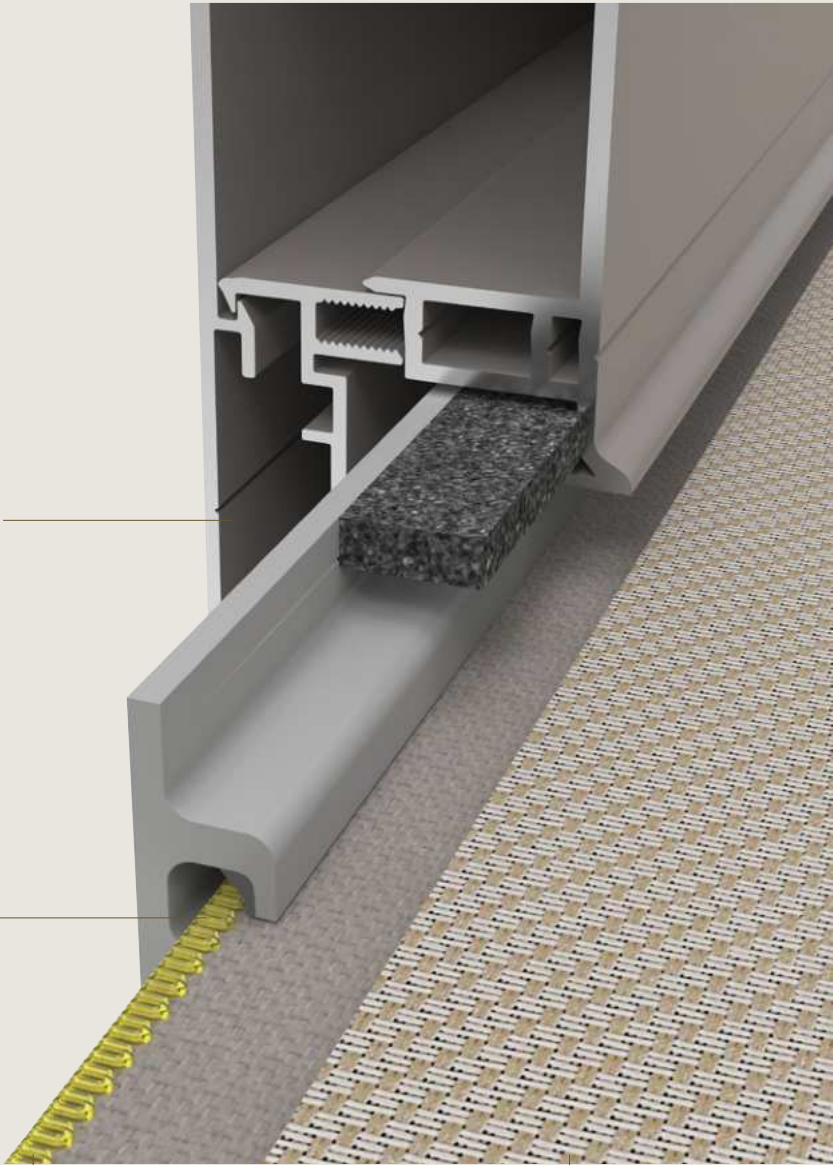
2005: With Fixscreen, Renson launched the first windproof external sun protection screen that could handle wind speeds of up to 130 km/h. So, how does it work? The screen zips tight in two side channels while being lowered, meaning flapping and torn screen fabric are a thing of the past. A genuine milestone, as well as the first step toward a remarkable success story.


Suitable for large glass surfaces
Fixscreen covers up to 22 m²


Durable inner rail equipped with Smooth-technology
The patented, co-extruded, wear-resistant top layer in our HPVC inner rail ensures a smooth, durable and soundless guiding of the fabric.

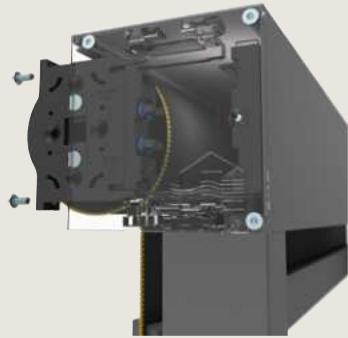
Fixscreen-technology guarantees high wind resistance
High wind guarantee up to 130 km/h, thanks to the use of symmetrical zips.

Vast collection of fabrics and powder coating colours
For the perfect match with all types of architecture









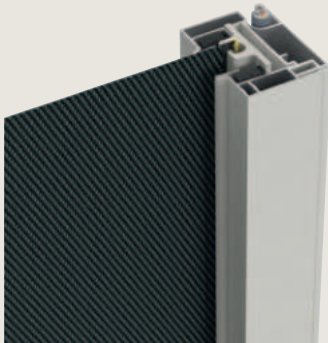
Fabric set installation and disassembling

Quick and safe installation and disassembling of fabric set thanks to **Connect&Go-technology**



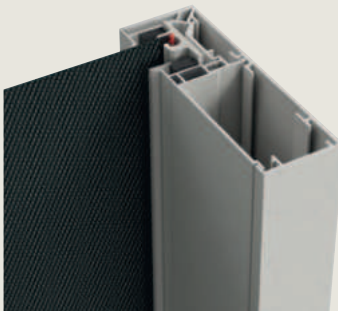
Unique fabric tubes

The standard fabric tube is fitted with a unique recessed groove to limit the impression of the fabric eyelet, with the aim of reducing horizontal lines forming in the fabric. The Fixscreen Minimal, Fixscreen 100 IM 1, Fixscreen Slim IM 7 and freestanding models also have a detachable click-profile for large widths. This ensures easy (dis)assembly when replacing the fabric.



Side guiding channel for hiding cables

The open side guiding channel S is equipped with an extra channel in which the power supply cable for the motor can be concealed.



Three-part side guiding channel

The deep side guiding channel D for recessed screens ensures the accessibility of the head box after installation. This three-part guiding channel has a U-shaped base profile, allowing the fabric set to be easily disassembled without having to completely disassemble the side guiding channel itself. This eliminates the need for cutting or breaking, and maintains the water and wind tightness.

Fixscreen® is known in the USA as ZipShade®



Fixscreen®
Surface-mounted

FIXSCREEN® RANGE

Surface-mounted



- Softline & Square design
- Surfaces up to 22 m²

Surface-mounted Solar



- Square design
- Surfaces up to 10,8 m²
- Control via solar energy
- Easy installation – no wiring, breaking
- Perfect for small renovations
- Seven-year warranty on solar kit

Recessed



- Square design
- Surfaces up to 22 m²
- Fully conceal the screen in the façade cavity
- Fully retractable bottom bar
- Fabric close or aways from the window, ideal to combine with a fly screen
- Unique 3-parted recessed side guiding channel
- Possible to combine with corner screen

BENEFITS

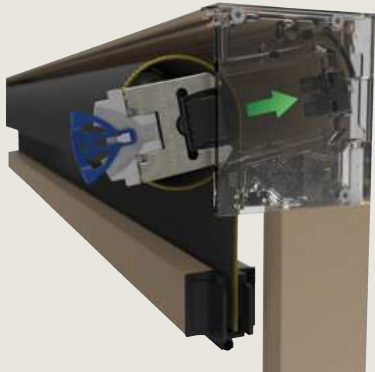
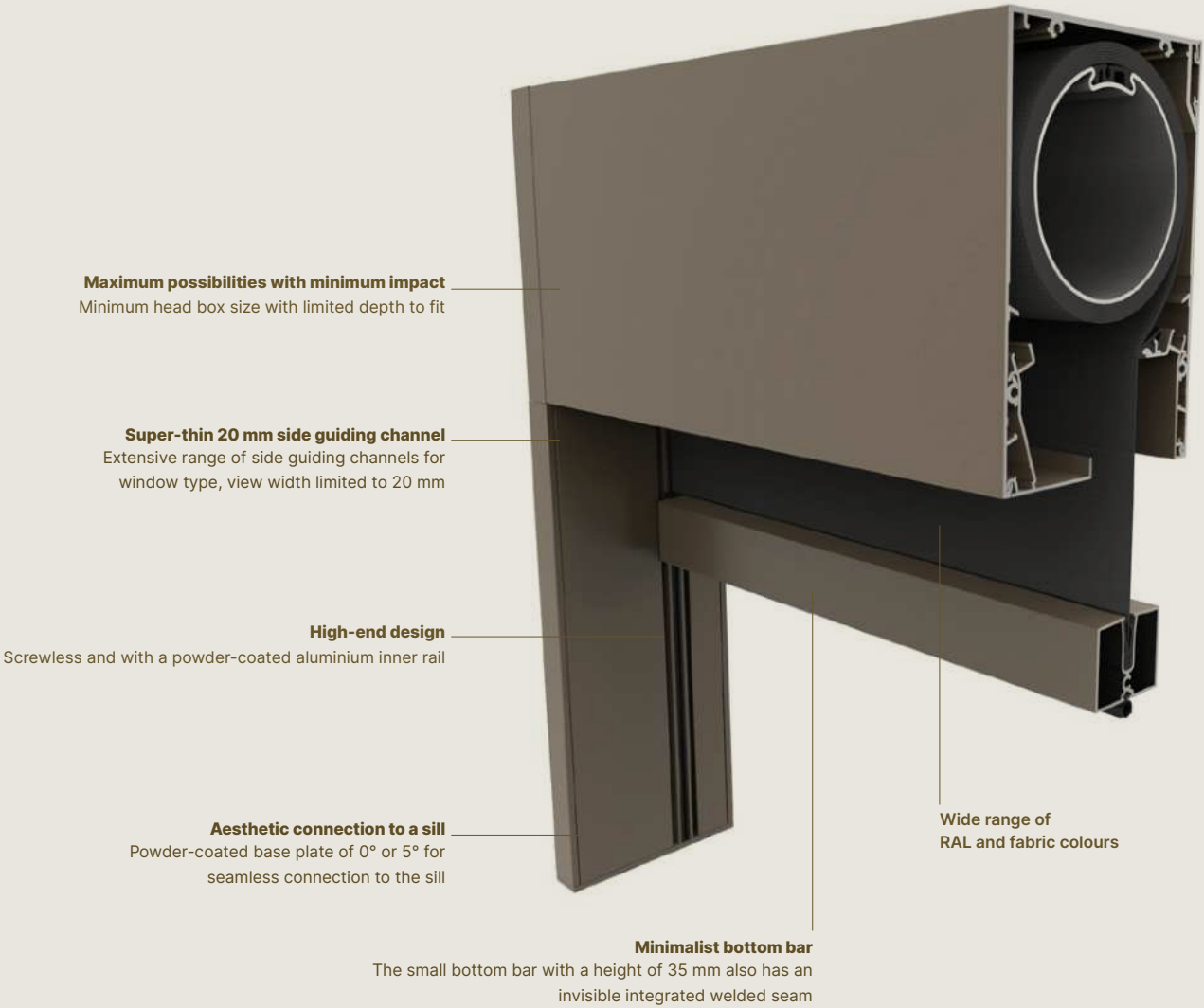
- Extremely wind-proof screen
- Privacy
- Light control
- Heat and energy control
- Tight fabric tension
- Joinable



Scan me! And discover all
our sun protection solutions.

FIXSCREEN® MINIMAL

Renson is a pioneer in windproof sun screens against winds of up to 130 km/h, and the Fixscreen Minimal raises the bar even higher. The ultimate aim is to conceal the screen head box and side guiding channels to the maximum extent during renovations or retrofitting. To ensure this, each and every part and detail of the Fixscreen sun screen was studied in depth: head box, side guiding channels, fabric set, dimensions, screen tension, etc. The result of these efforts being: minimal dimensions that enable a nearly invisible installation.



Fabric set installation

Thanks to the Fixscreen Minimal **Connect&Go-technology**, installing the fabric set is now even faster and safer. The integration of the **Click&Safe technology** ensures the fabric set can be clicked into the head box without screws so the installer has their hands free to complete the installation safely.



Smooth-technology

This aluminium inner rail also features the unique, successful **Smooth-technology** formula. This ensure the zip glides silently into the guiding channel that, in combination with the **Fixscreen-technology** guarantees high Wind resistance in the long term.



Extreme high wind guarantee

In addition to the wind warranty up to 130 km/h in closed position for standard applications, there is also a high wind warranty up to 100 km/h for freestanding applications. Perfect for enjoying the balcony or patio with shelter from the sun.

A GUIDING CHANNEL FOR EVERY APPLICATION

The Fixscreen Minimal range has a wide selection of side guiding channels, which allows combinations with any type of window. The **XS**-side guiding channel, extremely slim at just 20 mm x 55 mm. Ideally suited for both surface-mounted and recessed use on classic as well as fine window frames.



XS-side guiding channel

The deep recessed side guiding channel (**S/M/L**) is mainly used in freestanding applications. This type is matched to the depth of the corresponding head box and is installed **sideways** to the structure.

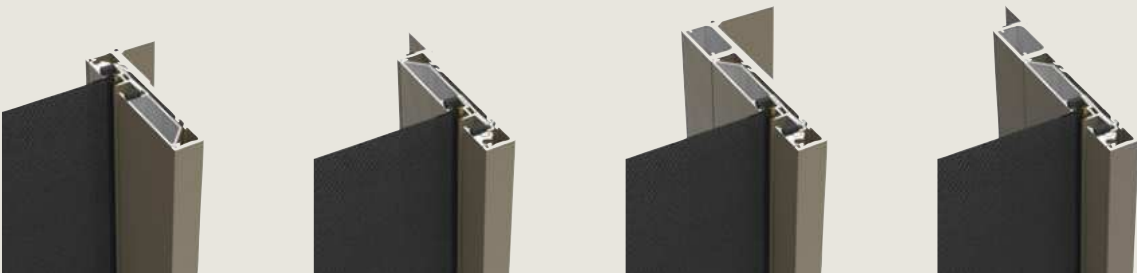


M side guiding channel

In addition to a guiding channel for sideways installation, the Fixscreen Minimal IM 7 application also has two types of side guiding channels for **fixation on the window frame**.

- The Window Front (**.WF**) type for Frontal fixation on the window frame.
- The Window Side (**.WS**) type for Sideways fixation on the window frame.

Both types are available for any type of head box (**S.WF/S.WS – M.WF/M.WS – L.WF/L.WS**), (**S.WF/S.WS – M.WF/M.WS – L.WF/L.WS**), as well as in an expanded ‘+’ version in combination with the base box **M.W+ (M.WF+/M.WS+)**. Thanks to the integrated rubber detail on the rear, these side guiding channels also guarantee a rain-proof combination with the window!



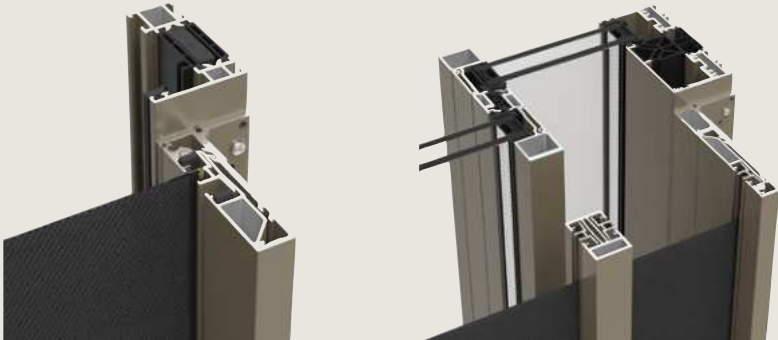
M.WF side guiding channel

M.WS side guiding channel

M.WF+ side guiding channel

M.WS+ side guiding channel

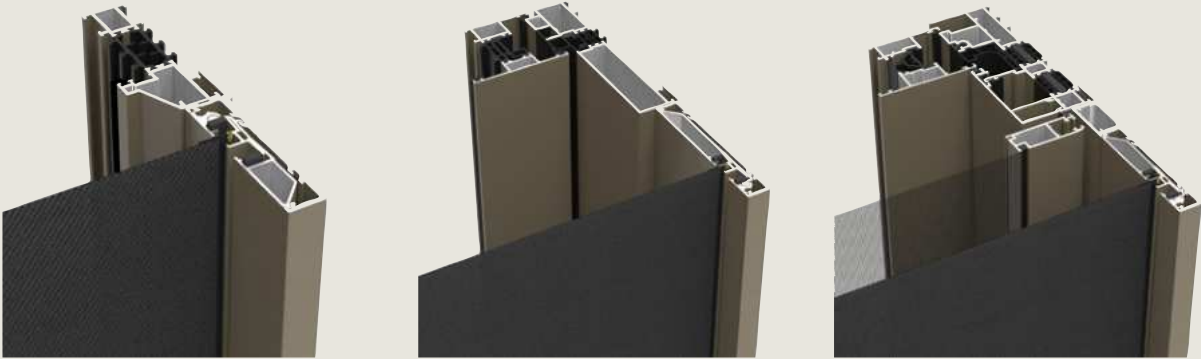
Depending on the type of window, front or sideways fixation on the window will be more suitable. The **.WF side guiding channels** will now be a perfect combination with minimalist window frames, as well as wider standard window frames.



S.WF in combination with a fixed window

M.WF+ in combination with C.F and a minimalist window

The **.WS guiding channels** in turn are a perfect match for slim steel look windows, modern narrow (sliding) windows, as well as for combinations with (sliding) insect screens even with minimalist windows, and for all combinations with an Invisivent window louvre. As standard, the guiding channels are pre-drilled to reduce installation speed.



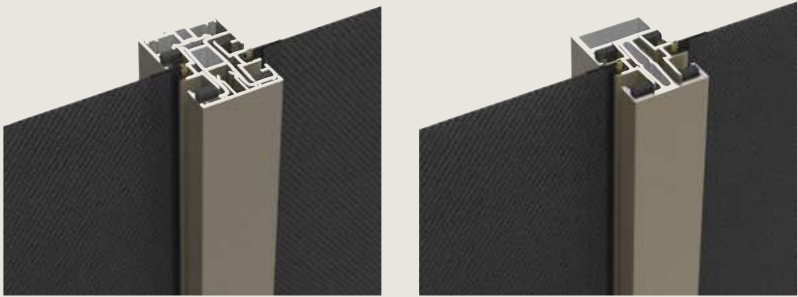
S.WS in combination with a steel look window

L.WS in combination with a sliding window

M.WS+ in combination with a sliding window and sliding screen

The range is completed with two coupling side guiding channels, the **C.40** and the **C.F**.

- The **C.40** coupling side guiding channel is installed on the window frame and allows two screens to be Coupled together, with a maximum overall width of 10 m. Application in IM1 or IM 7A.
- The **C.F** coupling side guiding channel is a unique freestanding coupling side guiding channel that is used with the Medium head box in IM 7B. In this case, the coupling side guiding channel is installed completely separate from the window and up to 3 parts can be connected, with a maximum total width of 12 m. This total solution is ideal for minimalist sliding windows with reinforcement profiles or out-ward-sliding windows.



C.40 - Coupling side guiding channel for IM 7A

C.F - Freestanding coupling side guiding channel for Medium IM 7B



FIXSCREEN® MINIMAL RANGE

Surface-mounted



- Square design
- Surfaces up to 27,8 m²
- Side guiding channels of only 20 mm width

Surface-mounted Solar



- Square design
- Surfaces up to 10 m²
- Control via solar energy - no wiring, breaking
- Plug & play installation
- Perfect for renovation of minimalist windows
- Seven-year warranty on solar kit

Recessed



- Square design
- Surfaces up to 27,8 m²
- Minimum head box depth to fully conceal the screen in the façade cavity
- Fully retractable bottom bar
- Unique solutions for minimalist windows

Curtain Wall 50



- Square design
- Surfaces up to 21,6 m²
- Fully retractable bottom bar
- Design allows for thermal expansion
- Infinitely linkable
- Centralized screwing
- Co-development with Reynaers Aluminium

BENEFITS

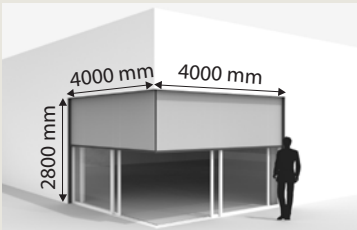
- Extremely wind-proof screen also freestanding with a wind resistance up to 100 km/h
- Light control
- Tight fabric tension
- Unique solutions for minimalist windows for both new build and renovations
- Heat and energy control



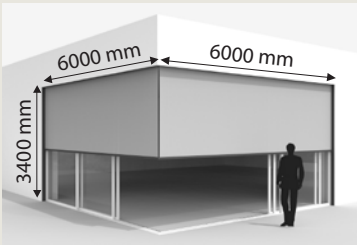
PANOVISTA® FOR 'GLASS ON GLASS' CORNER WINDOWS

A unique range of screens for 'glass on glass' corner windows
 'Invisible architecture' is a trend highly compatible with the trend towards minimalism. The Panovista is Renson's perfect response to this development. This range is perfect for applications with 'glass on glass' corner windows when there are no satisfactory solutions with conventional screens. Further, the Panovista can be integrated almost invisibly into the architecture of the building. And most importantly, there are no side guiding channels or cables on the corner.

- Two types of boxes:
- The **Panovista** has an opening between the two fabric sections and offers a wind resistance up to 37 km/h. Yearly maintenance is advised.
 - The **Panovista Max** integrates an aesthetic zip at the corner. The corner is therefore fully closed, ensuring improved wind resistance up to 90 km/h. Yearly maintenance is mandatory.



Max. total surf.: 22.4 m²



Max. total surf.: 30 m²

Panovista® (no middle zip)



Panovista® Max (with middle zip)



red dot design award
winner 2018

BENEFITS

- The panoramic outside view is preserved
- The head box and side guiding channels are fully integrated into the façade
- Simultaneous movement of the both sides with a single motor
- The zip on the corner automatically zips the two fabrics together
- Combines perfectly with other Renson screens



TOPFIX®, TOPFIX® VMS AND TOPFIX® MAX

The range of screens for horizontal windows

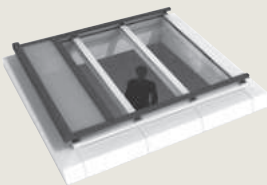
This sun protection screen enables optimal management of the incoming sunlight in all horizontal or inclined glazing (verandas, skylights, etc.) and enjoys a guaranteed wind resistance up to 120 km/h.

Topfix®

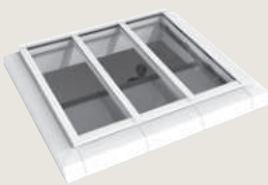
Topfix is a motor-operated horizontal sun screen equipped with a revolutionary span system combined with the renowned Fixscreen technology. This makes it possible to achieve unequalled tensioning of the fabric, which eliminates the need for traditional fabric supporting rolls. The Topfix can handle up to 12m² with the compact box. The box can be installed on top, sideways or at the bottom.



Box on top



Box sideways



Box at bottom
(indoor application)

Topfix® Solar

The new Topfix Solar is the latest addition of the Renson Solar range, and that up to as much as 12 m², a unique feature. The Topfix zenithal sun protection offers an effective and stylish solution for roof windows, verandas and skylights. Now also with solar control. Especially on roofs, this is an advantage. There is no need to interrupt the roof covering to feed a power cable through.

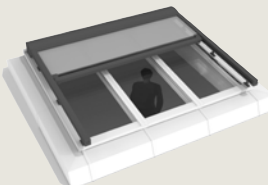


Topfix® VMS **VELUX**

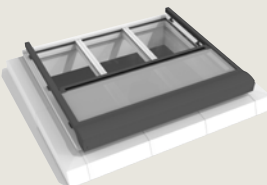
The Topfix VMS features a revolutionary tension technique, made possible by the renowned Fixscreen technology and has been specifically developed for the VELUX Modular Skylights modules. The Topfix VMS can be installed above the fixed and movable modules e.g. with special mounting feet, enabling a perfect installation onto the VELUX Modular Skylights.

Topfix® Max

Topfix Max allows the rolling of the fabric from top to bottom, from bottom or to top depending on the required aesthetics. Blackout is also achievable with indoor and outdoor applications. For the Topfix Max, widths of up to 5 m, and extremely large surfaces of up to 30 m² are possible.



Box on top



Box at bottom
(outdoor application)

BENEFITS

- Guaranteed at wind speeds up to 120 km/h
- Perfect fabric tension without fabric support rollers
- Topfix Max is also available as Freestanding applicaton
- Topfix® Max up to 30 m² per module

Fixscreen® is known in the USA as ZipShade® Top (Max)

Loggiawood®



PRIVACY

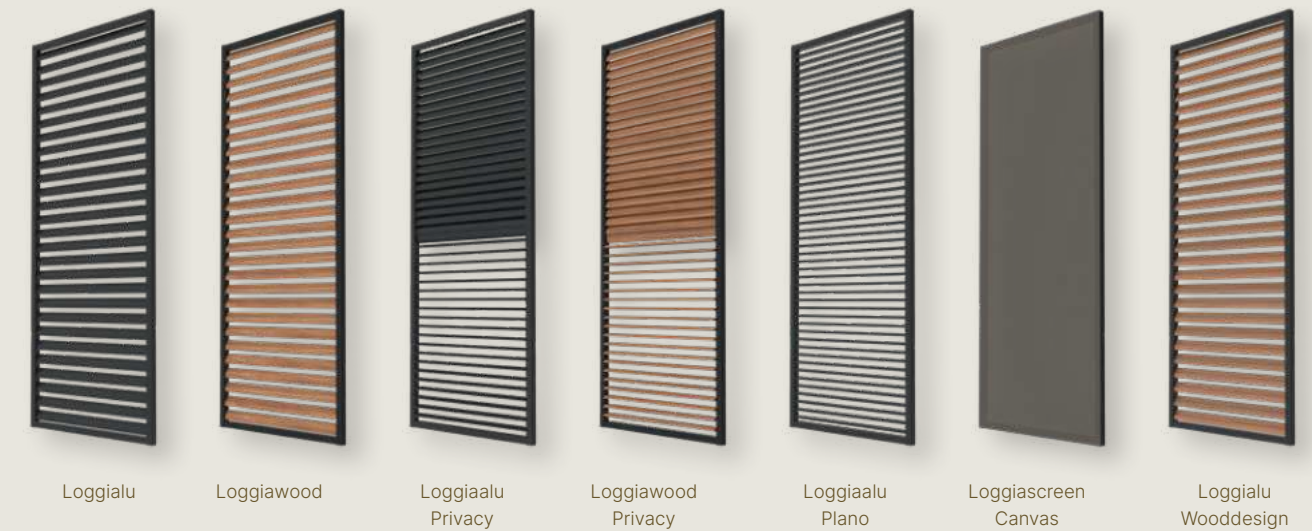
Privacy with rotating wooden or aluminium blades

LOGGIA®

Master daylight

The Loggia sliding panels combine the functionality of an efficient sun protection panel with the elegant look and aesthetic design within a high-quality and contemporary concept. With the vertical sliding panels, the owner can even influence the way sunlight enters rooms (i.e. dynamic sun protection).

The Loggia panels are constructed from aluminium frames finished with screens, and aluminium or wooden blades. It is also possible to opt for movable aluminium or wood blades, which can be manually rotated from the closed position to the fully open position, or vice versa.



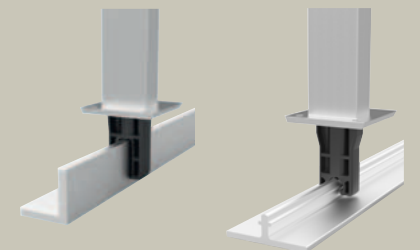
BENEFITS

- Multipurpose façade elements
- For simple and flexible use
- Aesthetic quality finish
- Possible to motorize

FLEXGUIDE®

The Flexguide is a self-regulating under-guide that uses spring tension to adjust itself to height differences with respect to inclines, construction tolerance, thermal dilatation, etc. It eliminates the need to place filling material under the under-guide profile to level out slopes (up to 50 mm).

The under-guide profile should be secured normally to the base. The Flexguide spring-loaded pin must always remain in contact with the under-guide profile, on inclines or uneven surfaces, or if the dimensions change, for example, due to temporary loads or thermal dilatation.

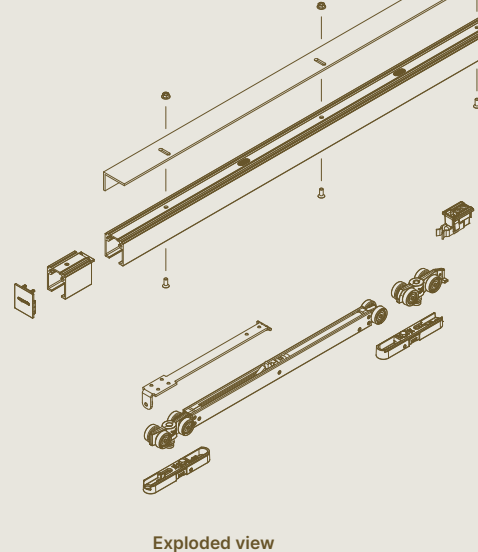




GUIDING SYSTEMS

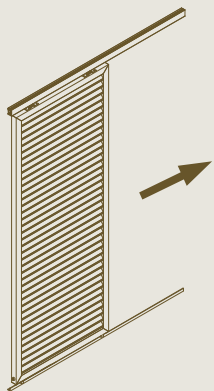
Possible systems

Proslide is a professional surface-mounted sliding door hardware system for both wall and ceiling applications. The unique guiding-in profile, specially developed for both recessed and surface-mounted installation, are suitable for both residential and non-residential new-build and renovation projects. Combining a guiding rail with the necessary accessories is child's play, as the wear-resistant roller assemblies and stoppers are universally applicable to both types of rails. This roller guide is suitable for single, double, telescopic, simultaneous, symmetrical and motorised sliding panels.



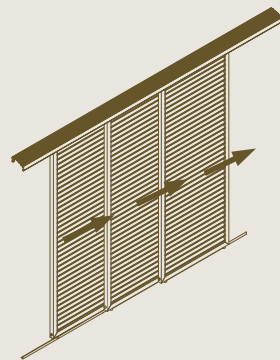
Single sliding 1D, 2D or 3D

In this application, one to three panels are operated individually. Each panel can be placed in the desired position without affecting other panels. Optionally, this version can be motorised.



Telescopic sliding

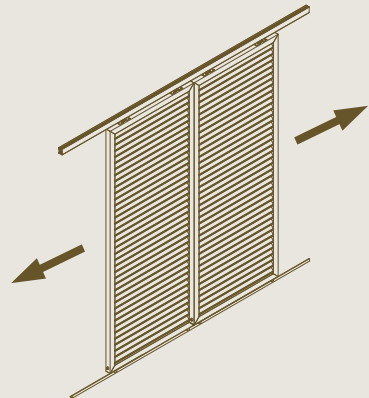
Telescopically connected panels are an option for applications requiring wider window surfaces to be shielded in one go. This involves linking two or three panels together in such a way that they telescopically slide out or behind each other when operated. The various panels slide along separate tracks and neatly stack behind one another in the open position. Optionally, the version with two panels can be motorised.



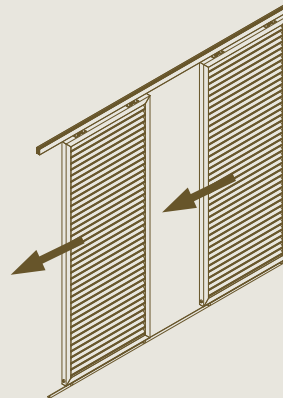
Symmetrical / simultaneous sliding

This system includes a series of two interconnected panels. The panels are linked in order to move simultaneously, either towards or away from one another (symmetrical) or in the same direction (simultaneous). Optionally, these versions can be motorised.

Symmetrical sliding



Simultaneous sliding



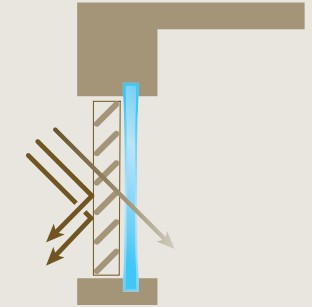


STRUCTURAL SUN PROTECTION

Sliding panels

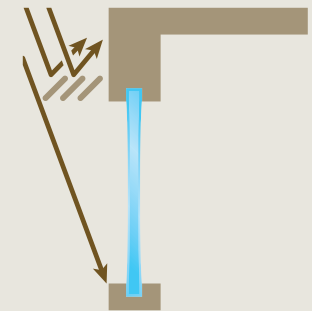
To meet the increasing demand for aesthetic, multifunctional façade elements, Renson has further expanded its **range of sliding panels**.

The Loggia panels are made of frames with aluminium blades, wooden blades or fabric inserts. The Patio panels are sliding cassettes where the aluminium blades are screwed in between vertical end cap plates (e.g. Sunclips and Icarus).



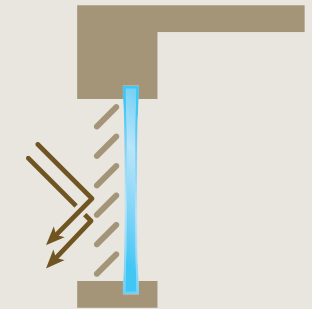
Horizontal structural sun protection

Fixed canopies with horizontal blades mounted to an aluminium support structure. As these canopies hang above the windows, they do not interfere with the view outside. The systems also provide excellent shade when the sun is high in the summer months. When the sun is low during the winter, they allow the pleasant warmth of the sun to enter.



Vertical structural sun protection

Vertical aluminium blades for the window are attached to an anchored support structure on the façade. Because of the dimensions of these installations and the fact that fixed as well as movable blades remain in front of the windows, such systems are frequently used in project construction and less so in residential applications. The production of a similar application requires customisation and the installation must be entrusted to a specialised steel or façade builder.



Possible systems

Multiple types of blades can be used in all systems. Depending on the desired shading and required transparency, the blades can be positioned at different inclination angles and with different degrees of blade pitch.



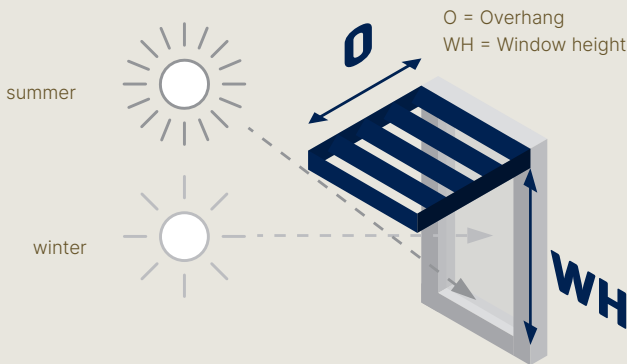
HORIZONTAL STRUCTURAL SUN PROTECTION

Horizontal shading offers the ideal solution for managing heat entry through sunlight, without impeding the view. Applied especially above window frames on south-facing windows.

During summer, when the sun is high, horizontal structural sun protection offers ideal protection. During winter, when the sun is low, they allow the sun's heat to enter the building.

Recommended overhang of the brise-soleil

For optimal results, it is important that the overhang is correctly tailored according to the orientation of the façade and the height of the window. The dimensions of the overhang recommended by Renson in the table to the right, is calculated to ensure 75% of total heat radiation is kept out during the summer by the structural sun protection.

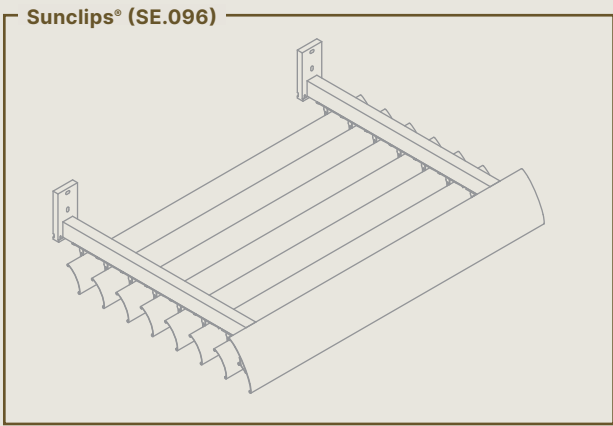


Orientation of the façade	E	SE	S	SW	W
Recommended overhang O	1.2 x WH	0.8 x WH	0.5 x WH	0.8 x WH	1.2 x WH

Programme available for specific calculations

BENEFITS

- High design value
- Perfect sun protection for south-facing facades
- Views outside are retained
- Enjoy the heat and light from the sun during winter months
- Fast installation thanks to clip system



CONTROLLED OUTDOOR CLIMATE





OUTDOOR LIVING

Whatever the weather, we like to spend as much time as possible outside. Our gardens are no longer separate from our houses. Together they are one. That is why we long for more atmosphere, comfort and optimum lifestyle pleasure. Being outside becomes living outside!

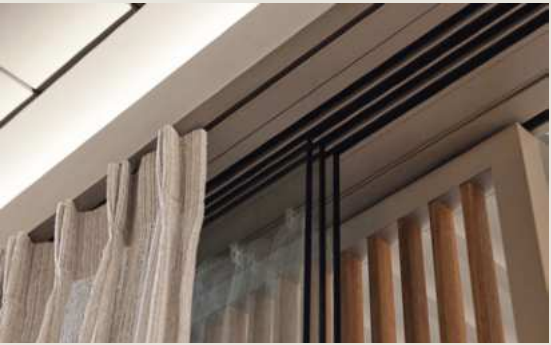
Who wants to live outside has to consider nature's elements. If the sun becomes too hot, it starts to rain, or the wind suddenly blows harder, we have to run inside. Or don't we? Outdoor coverings are the solution. Available in all colours, adapted to the style of the house, free-standing or attached to the house or integrated in an existing (roof) structure.



Translucent blade Lineo® Luce



Integrated lighting



Side elements



Heating

These comfortable outside spaces ensure a good atmosphere, but also warmth and cosiness. When it gets darker at night, simply switch on the integrated lighting. Even if it gets colder, you can still stay comfortably outside. Depending on the size of the patio cover, one or more heating elements can be included. You can even play your favourite music on the terrace thanks to the incorporated speakers.



Scan me! And discover all our outdoor solutions.

CAMARGUE®



Patio cover with rotatable aluminium blades and perfect integration of side elements and options.

ALGARVE®



A horizontal, water-repellent sun protection roof with rotatable aluminium blades. Side elements can be surface-mounted.

CAMARGUE® SKYE



Fully closable patio cover with rotating, retractable aluminium blades. The side elements are invisibly integrated in this model as well.

ALGARVE® CANVAS



Construction with fixed roof, aesthetically finished with stretch ceiling using Fixscreen-technology. Multi-use as a patio cover or carport.

LAPURE®



Minimalist patio cover design that attaches to the house and boasts a water-proof, windproof sun protection screen cover and an open, panoramic view. Side elements can be surface-mounted.

AERO® SKYE



Horizontal water-repellent and sun protection roof with rotating, retractable blades that can be integrated perfectly into new or existing structures.

AERO®



Horizontal, water-repellent sun protection roof with rotatable blades that can be integrated perfectly into new or existing structures.

AERO® CANVAS



Minimalist patio cover with fixed roof, aesthetically finished with a stretch ceiling with Fixscreen-technology. Can be integrated into new or existing structures.



Camargue®



Camargue® Skye



Aero®



Lapure®



Algarve®



Aero® Infinity

CONTROLLED
OUTDOOR CLIMATE

ARCHITECTURAL UNITY





Linarte®

FAÇADE CLADDING

With its aluminium cladding, Renson offers a solution for a durable aesthetic finish to the façade and interior. The architectural look of these profiles are an added value for any home that aims for powerful lines in its facade. Thanks to innovative applications such as invisible door finishes, we respond to the trend towards minimalist architecture in contemporary homes.

Aluminium blades add a unique and pure look to the outdoor façade of your home. The Linius wall-mounted blade system ensures continuous façades with clean lines into which even the doors and garage doors can be integrated. Available in all possible RAL colours, adapted to the joinery of the façade.

The inconspicuous integration of ventilation and sunscreens also follows this pattern. That is why ventilation louvres have evolved the last years from large block-systems on the glass to discrete flap gratings, such as the Invisivent, which are positioned almost invisibly on the window profile.

Renson also considers the uniformity of its systems allowing the design of the ventilation and sun control system to be perfectly coordinated.



Scan me! And discover all our façade cladding solutions.



ARCHITECTURAL UNITY

LINARTE®

VERTICAL FAÇADE CLADDING

Linarte is an **aluminium façade cladding system** specially designed for architects who strive for a sleek, **minimalist aesthetic**. Choose from an extensive palette of colour finishes to bring your vision to life. Our profiles offer **invisible integration of garage doors and doors**, allowing your design to maintain continuity and uniformity. You can complete your façades with sophisticated finishing solutions that **seamlessly integrate** functional items, such as **sockets and intercoms**.

Linarte is suitable for both straight and curved façades, and can also help shape your **interior**. Lightweight yet robust, Linarte guarantees **durability, colour fastness and ease of maintenance**. In addition, aluminium is fully recyclable, which not only strengthens your design, but also has a positive ecological impact on the future.



Concealed fixation

The patented clips ensure a sleek design while allowing thermal expansion at the same time. In addition, they make replacing damaged profiles very easy.



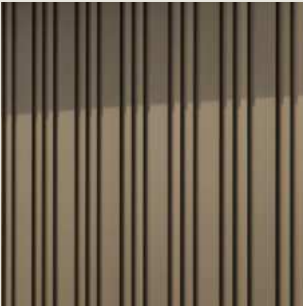
Linarte®

COMBINE PROFILES AND COMPOSE
A UNIQUE FAÇADE RHYTHM

Product overview



Linarte® BLOCK 16



Linarte® BLOCK 16L



Linarte® BLOCK 25



Linarte® CONE



Linarte® EVEN



Linarte Wood Design

The new Linarte Wood Design finishing lets you create a unique façade with the grained structure of wooden cladding, but with the durability and ease of maintenance of our high-quality aluminium façade profiles. With this natural, warm and soft appearance, façade architecture takes on a new dimension. The charm of wood combined with the quality of aluminium brings the best of both worlds together. Linarte Wood Design, available for all BLOCK profiles, promises even more creativity for unique architectural designs.

Coriander Oak



Toffee Oak



Total concept

To create uniform façade architecture for both new construction and renovation, the range extends beyond the standard profiles. The specially developed corner and finishing profiles, as well as the **countless integration possibilities**, allow the authentic design to continue seamlessly. Thanks to the high-quality finishing, the profiles are also suitable for interior use and ensure a perfect fit between indoors and outdoors.

Colour finish

Linarte is available in **different finishings**. Renson offers all possible RAL colours, colour anodisation, as well as the new Wood Design finish. For an architectural, contemporary look, a textured coating delivers the best results with minimum risk of scratches.

Customisation

The Linarte façade cladding is made up of individual profiles, which means the different types can be installed randomly together. This lets you create your own design using a playful random effect or a repetitive motif. The **wooden inserts and LED modules** mean you can finish the façade to your own taste.

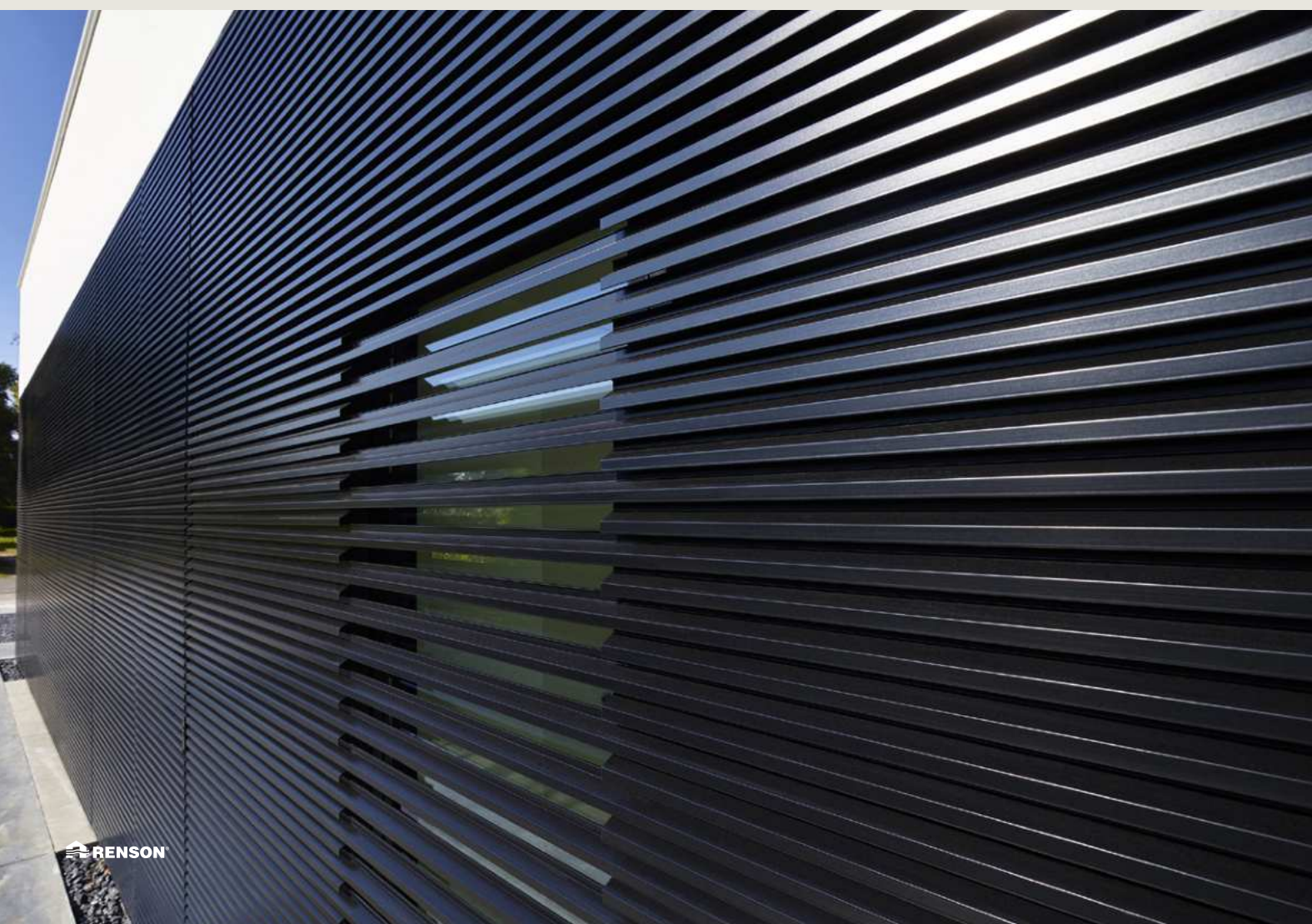
Easy installation

The intelligently developed and **patented clip system** ensures easy installation. The system is adjustable in width thanks to the clip technology and the individual profiles, thus always guaranteeing perfect alignment with the surface area to be covered.

BENEFITS

- Sleek minimalist lines
- Invisible integration with doors and garage doors
- Creative addition to your facade
- Various integration possibilities
- Suitable for curved façades
- Suitable for interior applications
- Choice of any RAL colour
- Light, sturdy system
- Fast installation thanks to clip system
- Durable, colorfast, and maintenance-friendly
- Aluminum is 100% recyclable





LINIUS®

HORIZONTAL FAÇADE CLADDING

With the Linius system, façades or façade parts can be finished to create seamless wholes with a strong horizontal accent. Gates or doors can also be clad with the same profiles. This way you get a precise and tight fit with the rest of the façade to create a uniform whole. The façade system consists of individual aluminium profiles, which are available in different versions. Depending on the application, you have the choice between either completely closed or ventilating systems. Due to its high quality finish, Linius is also suitable for indoor use.

Sleek lines

Accentuate the horizontal surfaces of your façade. Blend gates and doors unobtrusively into the façade. Inside & outside use The high-quality finish makes the profiles suitable for interior applications as well.

Curved façades

The individual profiles even make it possible to finish curved façades with Linius (project applications).
Finger clamp protection for sectional doors
This helps to prevent fingers becoming trapped between the different gate sections.

Concealed fixation

The clips ensure the design remains sleek while still allowing for thermal expansion.

Fast installation

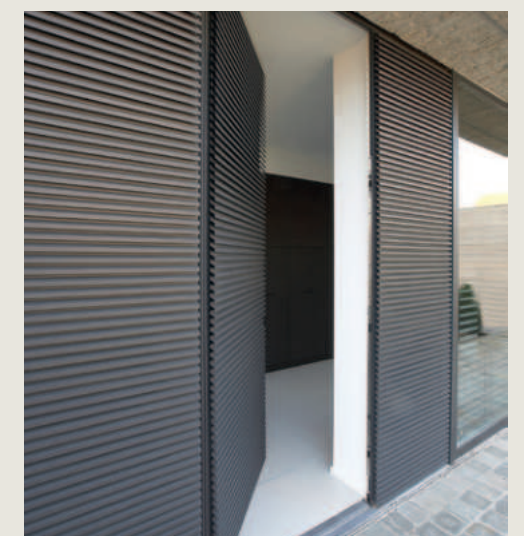
The clip system ensures smooth installation.



Sleek lines



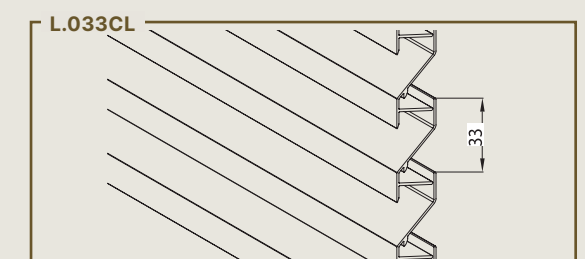
Curved lines



Invisible integration with doors

BENEFITS

- Sleek minimalist lines
- Invisible integration with doors and garage doors
- Suitable for interior applications
- Fast installation thanks to clip system
- Light, sturdy system
- Durable, colorfast, and maintenance-friendly
- Aluminum is 100% recyclable





PARCEL MAILBOXES

eSafe®

eSafe develops stylish and practical parcel letterboxes suitable for every type of customer and building. eSafe's mission is to enable letters and parcels to be delivered and collected at home 24/7 with an eye for design. The range of customization options adds architectural value.



ESAFE® DROPBOX SMALL

Mail and parcels are delivered through the top of the Dropbox to optimize the use of available space. The unit boasts a stylish design, as mail and parcels can be easily removed from the back.



ESAFE® MAXUS

An elegant parcel mailbox features distinct compartments for mail and parcels, along with a broad array of customization options for a personalized touch.

BENEFITS

- Sleek design
- Available in 2000 RAL colours
- Strong, quality powder-coating
- Stainless aluminium
- Handmade in Belgium
- Personalisation & integration (number, name, intercom)



Scan me and discover all eSafe solutions.



INVISIBLE DOOR SOLUTIONS

With over 100 years of expertise in high-quality door hardware, ARLU has become a reference in interior and exterior solutions. Sleek design and durable character are at the forefront.

'Discrete interior doors' – the trend for a timeless interior with a consistent minimalist design. The invisible door system perfectly anticipates this recent development. Thanks to this system, the door blends into the wall, without disturbing frames and hinges.

The Invisidoor is an invisible aluminium frame for interior doors, which can be painted to match walls perfectly and is equipped with a magnetic lock, detachable acoustic seal as a door buffer, and invisible 3D-adjustable hinges of Arlu. Thanks to these hinges, the outside cylinder of the door, usually seen on the outside of the door, is no longer visible.

DIVINA®

Architectural glass partitions and doors to optimize your space. The Divina range fits into any interior thanks to the many possible configurations. The sliding door aligned with its glass partition wall, the corner unit with its thin corner profile and the swing door with its invisible hinges are just some of the many features which give Divina a distinct look. The innovative aluminium structure provides a refined and minimalist look for homes, offices, hotels, and restaurants. Divina is available in different colours, fully customizable to your preferences.

BENEFITS

- Various configurations options and floor-to-ceiling application possible
- 35 mm slim profiles suitable for different glass thicknesses
- Identical sleek finish on both sides
- Swing door 3D adjustable thanks to Tyo invisible hinges
- Available in different colours
- Optional grid profiles can be positioned as desired



Pivotica® Pro E

PIVOTICA® PRO E

ARLU's pivotica pro E 100 is a minimalist and concealed pivot hinge for interior pivot doors, optionally with a mechanical hold-open position at 90°. When floor-mounted, the pivotica pro E is perfectly suited for installation in a fully finished door opening. It can also be built in to the floor for minimal door clearance at the bottom. The exact position of the pivotica can be chosen at will, meaning the hinge can be fitted either centrally, off-centre, or at the corner of the door. Lastly, Pivotica pro E is fully compliant with the EN1154 standard for door closure mechanisms. Pivotica pro E is also available in a 30-minute fire-resistant version with a special interdens kit.

BENEFITS

- Adjustable upper pivot with a compact installation height of 24 mm, adjustable in width and depth (± 3 mm)
- Seamless ceiling part can be plastered into the ceiling, for a seamless finishing
- Standard lintel part with a minimal upper clearance above the door (4-6 mm)
- New installation key provides easy control with minimal door opening at the top

INVISIDOOR 2.0

Create a seamless and sleek look in any space, without interrupting the visual continuity of the wall. Arlu's invisible door frames blend perfectly into various interior styles and are suitable for both residential and commercial applications. Thanks to its innovative door frame, hinges can be positioned after installation as well as the rotation direction of the door.



BENEFITS

- Fire-resistant IN (inward opening) and OUT (outward opening) versions certified according to EI1 30
- Suitable for standard and non-standard door sizes
- Low risk of cracks in plasterwork
- Compatible with a self-closing concealed door closer such as dormakaba ITS 96
- Can be upgraded with an electrical strike to unlock magnetic locks from distance
- A single frame or both left and right hand doors



Scan me and discover all ARLU solutions.



NOA – KRUISEM SHOWROOM & PRODUCTION

Monday to Friday: 9am – 5pm
1st & 3rd Saturday: 10am-2pm
Schedule an appointment online via hello@noa-outdoor.com

Polydore Rensonstraat 8 • 9770 Kruisem • Belgium
www.noa-outdoor.com



EXIT 5 – WAREGEM SHOWROOM & PRODUCTION

Monday to Friday: 8:30am – 12pm and 1.30pm – 6pm
Saturday: 9am – 12am
Make an appointment by telephone:
+32 56 62 96 87 or online via: www.exit5.be

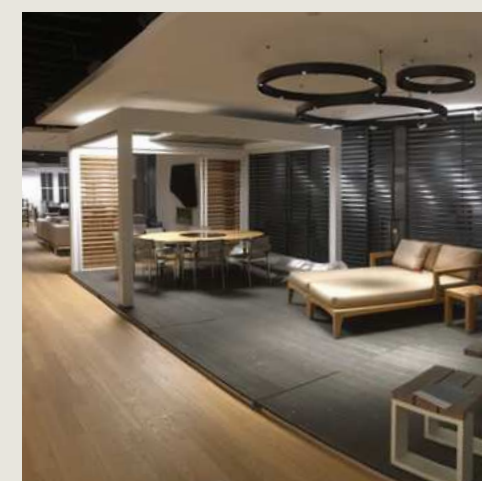
Maalbeekstraat 10 • 8790 Waregem • Belgium • www.exit5.be

SHANGHAI SHOWROOM – CHINA

No 33 • Lane 672 • Changle Rd • Jingan District
Shanghai, China
Tel. +86 21 6418 2566

AUSTRALIA (PERTH)

Monday to Friday: 9:00am to 5:00pm
1/87 Hector St W, Osborne Park WA 6017, Australia
+61 8 9445 99 33 • Info@renson.com.au



NYC SHOWROOM - USA

255 5th Avenue • 6th Floor • NY 10016
(469) 381-9268

PRODUCTION SITE - CARROLLTON

Renson® Inc. • 1910 North Josey Lane • Carrollton • TX 75006
+1 (469) 381 9268 • usa@renson.net • renson.net

